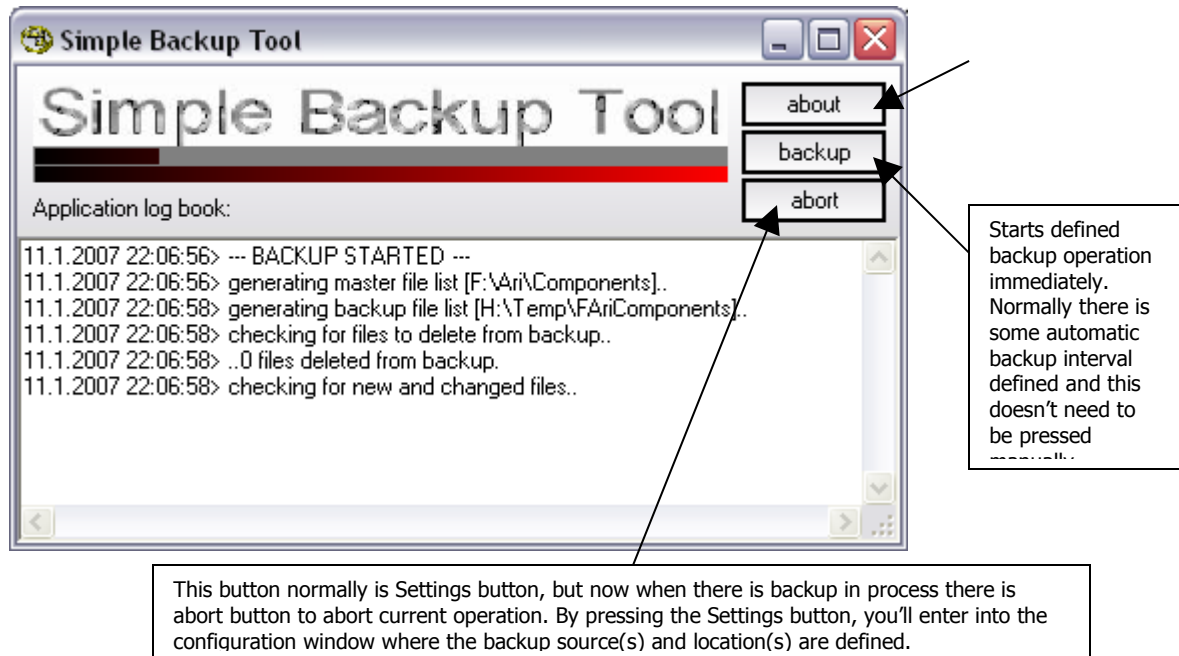


Configuring Simple Backup Tool

Simple Backup Tool will copy/synchronize one or more folders into some or more drive(s) defined as backup location. This document is to help configuring the SBT.

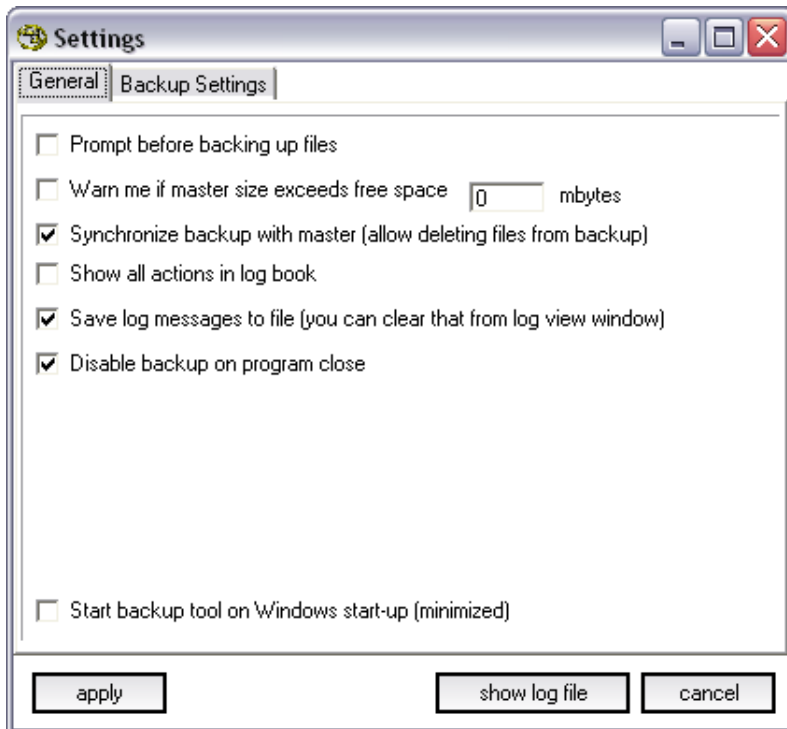
User Interface



Simple Backup Tool is normally run minimized on the system tray and the user interface is used for changing the settings, updating the SBT or just to monitor what's happening – or to check when the next automatic backup will be done.

Above screenshot is taken from the backup operation in process – situation. Above locations you can found on the following pages as an example of one configuration.

Configuration View



There are two tabs on the configuration view. On the first tab "General", there is general settings that are tried to put as they normally are turned by default to allow users to start using this application as easy as possible. But below are detailed explanations of each check:

"Prompt before backing up files" will show you confirmation dialog when the automatic backup is launched by the automatic backup timer. Backup will not start until the user has accepted to start the backup.

"Warn me if master size exceeds free space NN mbytes" will show warning message before starting the backup operation if the selected backup location (destination) does have less space left than the defined amount.

"Synchronize backup" will keep the backup location files exactly as they're on the master folder. In this case the backup operation will remove files from the backup location if they have been deleted from the master.

"Show all actions" will log down every single file operation that the SBT does. This is not recommended if you have really much files on the master folders – It will slow down the process dramatically.

"Save log messages" is just storing all the logged items into file under the SBT folder.

"Disable backup on program close"

"Start backup tool on Windows start-up" will launch SBT on Windows startup minimized into the system tray.

Settings

General **Backup Settings**

Folders: F:\Ari\Components browse
add
remove

Enable automatic backups with interval of 240 minutes

Folders: browse
add
remove

Enable automatic backups with interval of 60 minutes

Backup: H:\Temp browse
add
remove

apply show log file cancel

This will bring up folder select window, where you can the folder that you want to backup next.

When the folder is selected, by clicking add the selected folder to backup is added into the list of files to backup on list A.

This is for adding folders to B list. A and B, are just names, not priority.

Click to remove one selected item from the backup list.

This list contains the target locations for both above lists. Normally there is only one target drive and folder to do the backup into, but it's possible to have more than one trough this list.

For both lists, it's possible to define individual backup intervals trough these edits. Automatic (timed) backup is enabled when there is time defined and the corresponding check is in place under the A or B list.

Tab "Backup Settings" is for defining the folders to backup and to set the backup location (where the files should be backed up to). All the settings are saved and applied when the "apply" button at the bottom is clicked. There is also "Show log file" at the bottom to view the contents of the written log file if such exists.